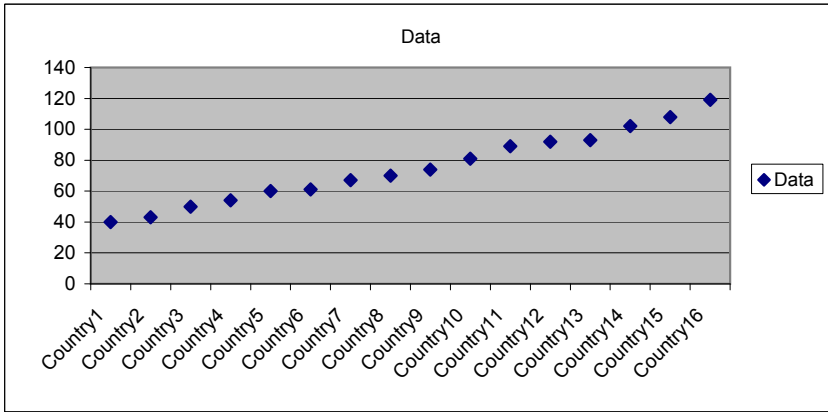


Line and XY Combination Chart

Useful for adding a target or benchmark line to a chart



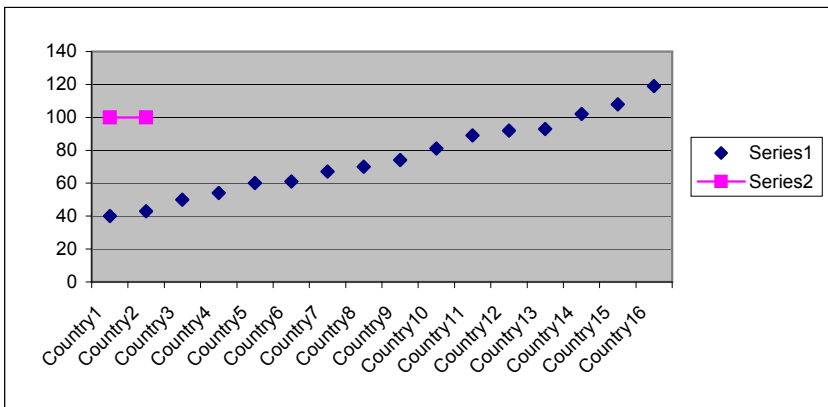
Instructions

1. Start with a line or column chart with all of the data in it

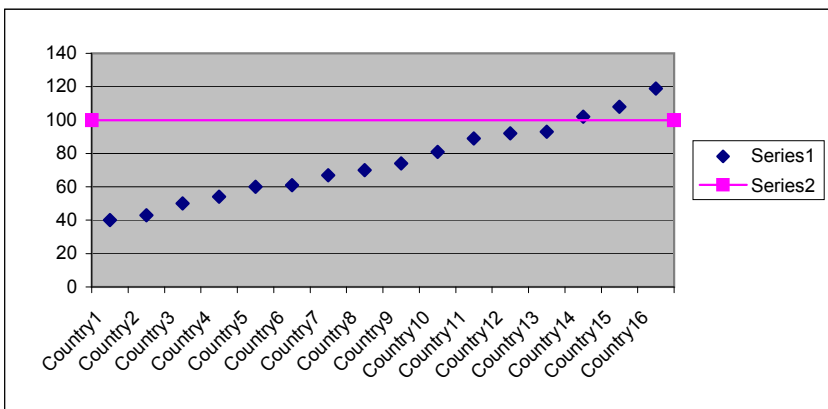
Country	Data
Country1	40
Country2	43
Country3	50
Country4	54
Country5	60
Country6	61
Country7	67
Country8	70
Country9	74
Country10	81
Country11	89
Country12	92
Country13	93
Country14	102
Country15	108
Country16	119

x	y
0.5	100
16.5	100

2. Create xy coordinates for two points. The y values will be the target value (say, 100 in this example) and the x values will be 0.5 and 16.5 (count how many countries you have, and add 0.5)

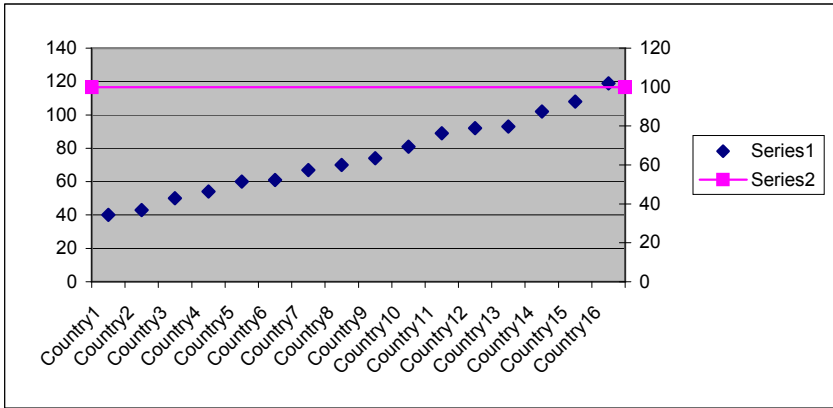


3. Right-click on the chart and choose "Source Data." Add a new series called "target" or whatever you want. For the values, select the y values that you just defined (in this example, cells C34:C35)

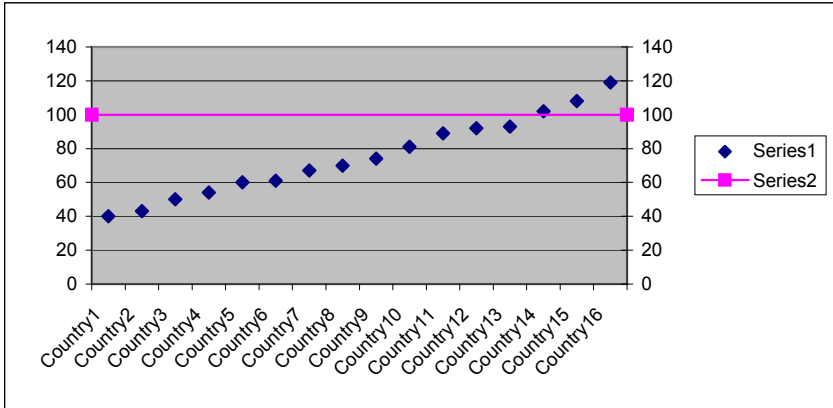


4. Right-click on the new series in the chart, and choose "Chart type." Choose XY, with connecting lines.

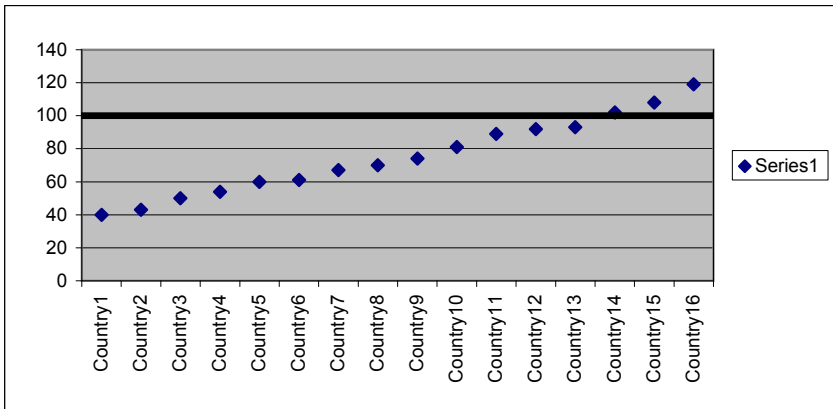
5. Right-click on the chart and go to Source Data. For the target series, there is now a field for x values. In this field, put the range of cells that you defined earlier (B34:B35 in this example).



6. Right-click on the chart and go to "Chart Options." Go to the "Axes" tab and check off the secondary Value (y) Axis box.



7. The scale may be different for the primary and secondary axes, so double click on each y-axis and set the scale to be fixed (un-check the "Auto" boxes for max and min). Make sure the max and min are the same for the primary and secondary axes.



8. Format the target line however you want, and delete it from the legend. Double-click on the secondary y-axis and make the tick marks and labels not visible.

