



**fhi360**

EDUCATION POLICY AND DATA CENTER  
Making sense of data to improve education.

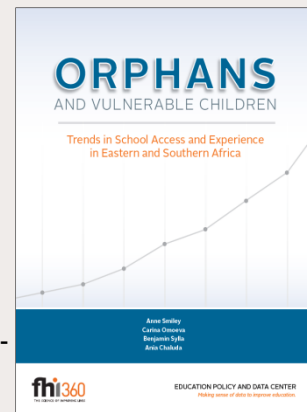
# e-Newsletter

MAY 2012

## Orphans and Vulnerable Children: Trends in School Access and Experience in Eastern and Southern Africa

BY ANNE SMILEY, CARINA OMOEVA, BENJAMIN SYLLA, AND ANIA CHALUDA

Now a decade since the term orphans and vulnerable children (OVC) entered the international development literature, FHI 360's Education Policy and Data Center took a look at 5 countries in sub-Saharan Africa to reflect on the continuing crisis and its relation to educational participation.



### ANNOUNCEMENTS

**EPDC has updated its extensive database.** We have extracted new data from the 2010 Demographic and Health Surveys (DHS) for both Cambodia and Malawi. We have also added up to date data from the UNESCO Institute for Statistics (UIS).

**EPDC is pleased to announce that we are in the process of re-designing our website.** The address will remain the same, but the site will have a new look and an improved user experience. Look for changes this coming fall.

### EPDC CORE SERVICES

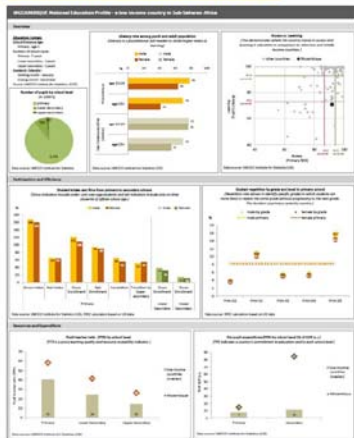
- [Data survey, compilation and extractions >](#)
- [Data visualization through graphs, maps, and profiles >](#)
- [Education trend and resource projections >](#)
- [Statistical analysis and methodology development >](#)
- [Policy-oriented and data-driven research and analysis >](#)

### FREE RESOURCES

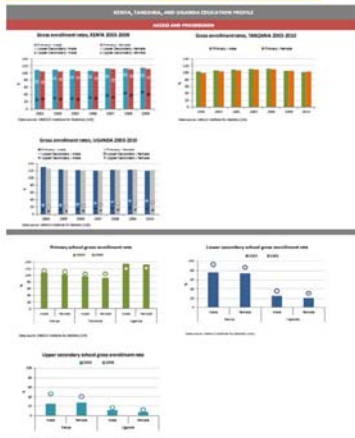
Go to our website: [www.edpc.org](http://www.edpc.org)

## RESOURCES

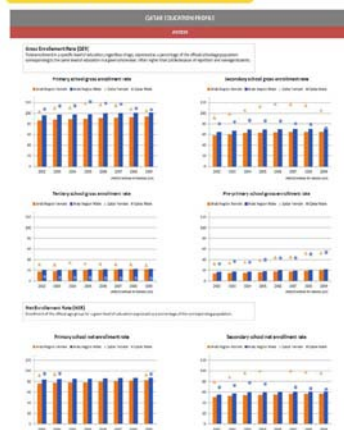
### National Education Profile



### East Africa Education Profile



### Qatar Education Profile



## National Education Profiles

EPDC has created a new series of National Education Profiles. These profiles contain information on literacy, access, learning, participation, repetition, resources, and per pupil expenditure. There are currently profiles available for 92 countries which can be accessed from the Country Profiles page by selecting the series from the Profile Collection menu.

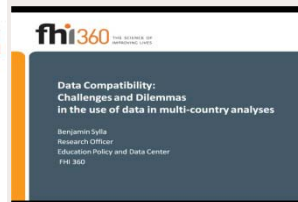
### East Africa Education Profile

EPDC has created a new profile which takes a look at education in East Africa. This profile compares education access, progression, and assessment scores of Kenya, Tanzania, and Uganda.

### Qatar Education Profile

The new EPDC in-depth profile of Qatar provides assessment scores by grade level and a breakdown of the existing schools by type and level. This profile also compares Qatar's progress in educational access with the rest of the Arab Region.

## PUBLICATIONS



### Data Compatibility: Challenges and Dilemmas in the use of data in multi-country analyses

[This presentation provides an overview of data compatibility challenges faced by organizations like EPDC when engaged in large multi-country studies. Using real world examples to illustrate common challenges associated with five broad categories of indicators \(Education System metadata, Pupil Volume / Participation Rates, Pupil Flow Rates, Education Inputs, and Expenditure / Costing\), this presentation shows causes of incompatibilities as well as tradeoffs associated with difference sources of education data.>](#)



### Forecasting enrollment: Principles, methods, challenges, and ways forward

[This presentation follows the theme of data quality, focusing more specifically on the use of historical data for forecasting pupil enrollments in the short and medium term future. It begins with an overview of the approaches to forecasting, including target-based, trend-based, and hybrid methods, with a more detailed overview of the methodology developed for the Global Partnership for Education, where the projections were used for setting milestones. The presentation ends with a call for greater information sharing across data analysts, as well as attention to the methodologies used in data analyses for countries where consistency and reliability of data remain a challenge.>](#)

EPDC looks forward to continue serving its partners and clients in improving evidence-based decision making and education planning by providing education data analysis, research, and user-friendly tools for better data utilization.

#### CURRENT AND FORMER PARTNERS AND CLIENTS

- Australian Agency for International Development (AusAID)
- Canadian International Development Agency (CIDA)
- Global Partnership for Education (formerly EFA Fast Track Initiative)
- Google
- International Institute for Applied Systems Analysis (IIASA)
- Ministries of Education in Mozambique, Namibia, Southern Sudan, Pakistan, Zambia
- The Netherlands Ministry of Foreign Affairs (MINBUZA)
- OECD International Household Survey Network (IHSN)
- United Kingdom Department for International Development (DFID)
- UNESCO Global Monitoring Report (GMR)
- UNESCO Institute for Statistics (UIS)
- UNESCO International Institute for Educational Planning (IIEP)
- United States Agency for International Development (USAID)
- World Bank EdStats



EDUCATION POLICY AND DATA CENTER  
*Making sense of data to improve education.*

Education Policy &  
Data Center  
FHI 360

1825 Connecticut Ave. NW  
Washington, DC 20009  
USA

Tel: (202) 884-8246  
Fax: (202) 884-8408  
Email: [epdc@fhi360.org](mailto:epdc@fhi360.org)

[www.epdc.org](http://www.epdc.org)

PO BOX 13950 | Research Triangle Park, NC 27709 US